



The Golden Gate Collaborative Marine Protected Areas of the Golden Gate Region

Bahman B.¹, Kuehn V.², Baird B.³, McGuire D.^{4†}

¹San Francisco State University; ²University of San Francisco; ³The Bay Institute, Co-Chair GG MPA Collaborative; ^{4†} Shark Stewards, Co-Chair GG MPA Collaborative; ⁴



Mission Statement

The Golden Gate MPA Collaborative is dedicated to community engagement to safeguard the ocean and coastal ecosystems of San Francisco and Marin Counties through our Marine Protected Areas.

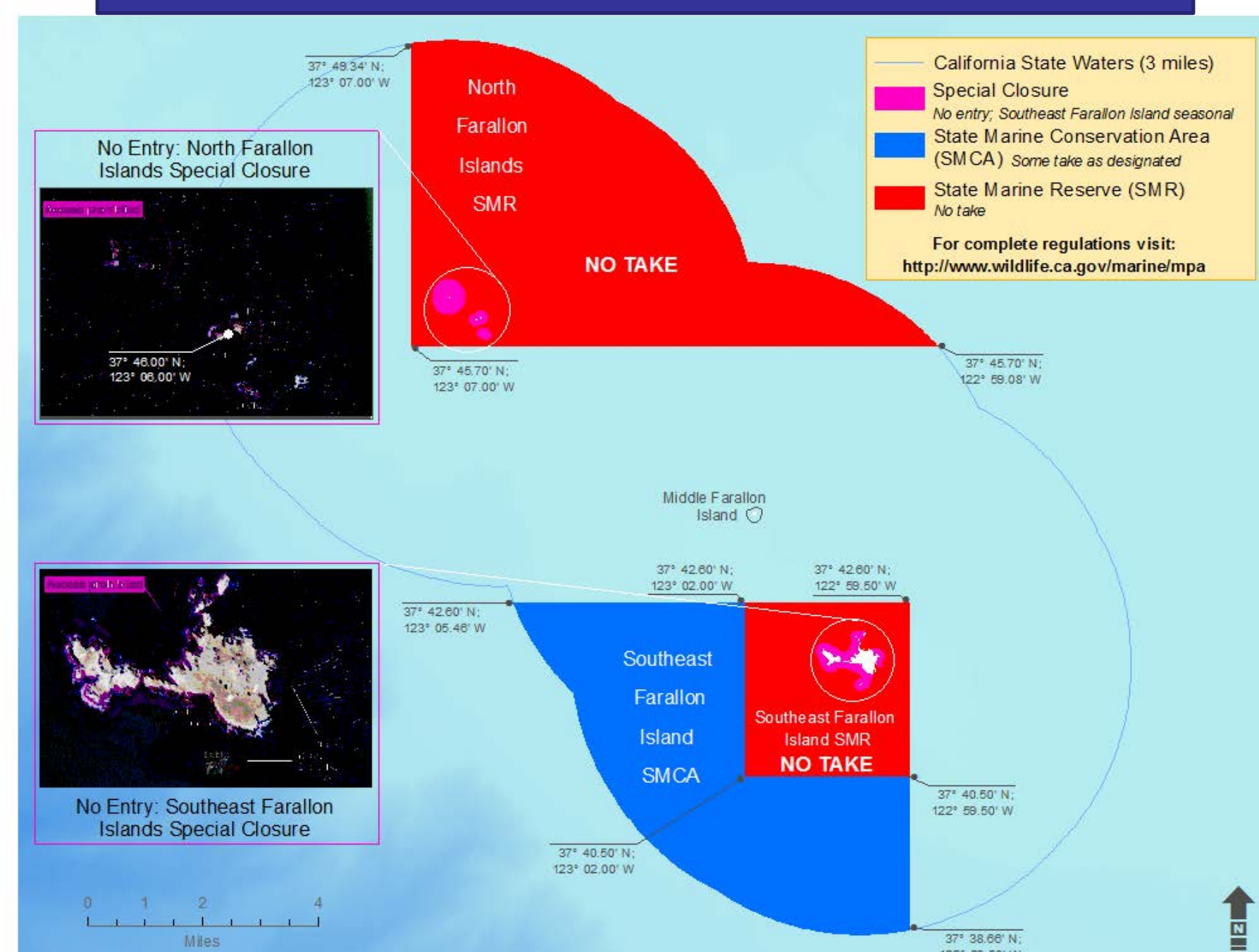
Golden Gate Region MPAs

Established in 2010, the Golden Gate MPAs are part of the N. Central Region of a MPA Network encompassing 124 MPAs statewide. Our collaborative focuses on MPAs ranging from Bodega Bay to Point Montara, including the Farallon Islands.

The Golden Gate MPA network includes:

- 6 No Take Marine Reserves.
- 4 Marine Conservation Areas (some take allowed as designated).
- 6 Special Closure Areas.
- Examples:

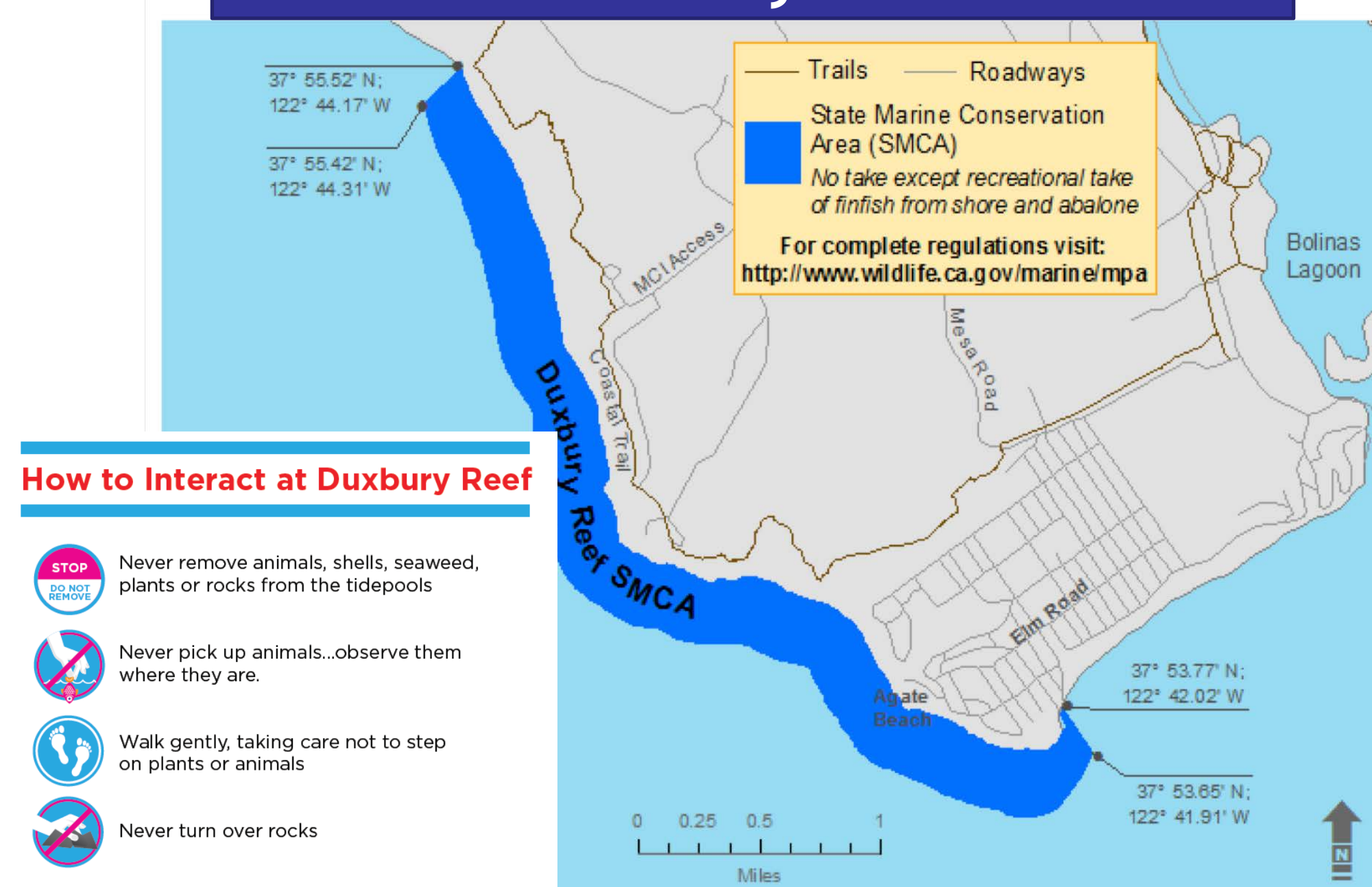
The Farallon Islands



The Farallon Islands are areas of habitat diversity and high species abundance. Also part of the US Fish and Wildlife Refuge System and the Greater Farallones National Marine Sanctuary, the Farallon Islands' protection includes Special Closures, a Marine Conservation Area and Marine Reserves under the State system.

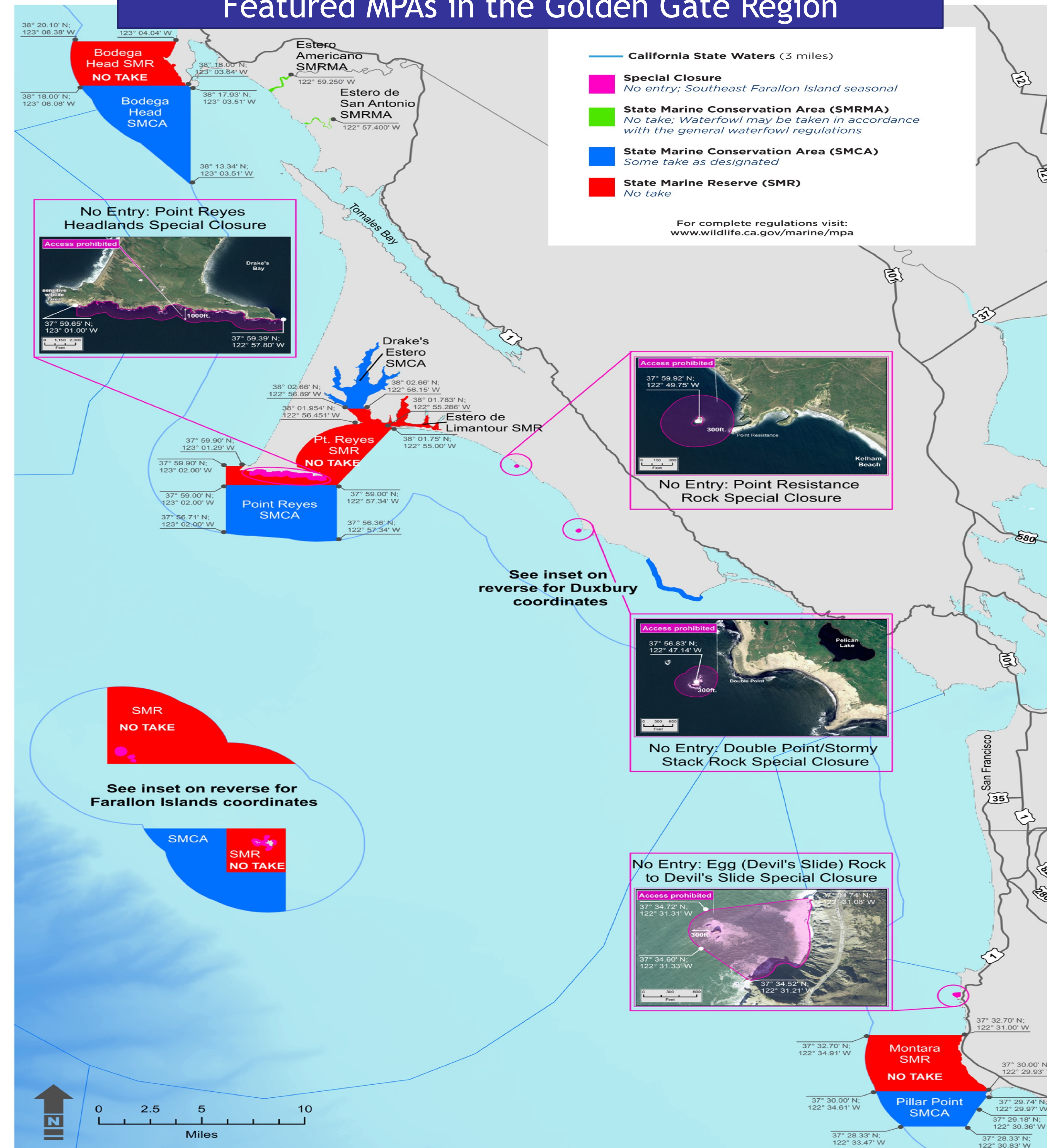
Repeat violations observed by USFWS staff at Southeast Farallon Island are leading to increased focus on boater education ashore and enforcement at sea.

Duxbury Reef



Located in lightly inhabited Marin County, Duxbury Reef is an area focus for educating tide-poolers and shoreside fishermen to observe Marine Conservation Area Guidelines through the Beach Watch Program.

Featured MPAs in the Golden Gate Region



Monitoring MPAs in the N. Central Region

A 2015 State of the Region Report* summarizes the first five years of monitoring results in the North Central Coast Marine Protected Areas. In addition to establishing a benchmark, the report summarizes habitat, human use and ecological factors in MPAs in the region, and provides information for management under changing ocean conditions.

Key Findings Include:

- Long-term monitoring at Stornetta Ranch revealed that the Sea Lion Cove MPA marked the beginning of a sharp increase of red abalone there, which has continued through 2015.
- Remotely operated vehicle (ROV) surveys inside and outside MPAs throughout the region in 2015 found increased abundances of some rockfishes and lingcod. Several hundred brown rockfish were observed in 2015, in contrast to only five individuals seen in 2009 and 2011.
- Surveys in 2014-2015 found shrunken kelp forests, followed by high sea urchin densities surpassing anything seen in the region in the past 10 years, leading researchers to examine the role of changing ocean conditions including the mass sea star die off also experienced along the coast.

*State of the California North Central Coast: A Summary of the Marine Protected Area Monitoring Program 2010-2015. California Ocean Science Trust in partnership with the California Department of Fish and Wildlife and Ocean Protection Council, 2015. For Copy of report go to OceanSpaces.org.

† Contact: David McGuire, david@sharkstewards.org

MPA Ambassadors



Who

We are local vessel captains, volunteers, scientists, government agencies, museums and aquaria, nonprofits, and docents that make up the Golden Gate Marine Protected Area Collaborative.

MPA Ambassadors provide direct outreach at public events, on the beach, and on the water using the brochure customized for MPAs and Special Closures in our region. Our goal is to work together as a community to raise awareness about these areas and to protect them for future generations.



How

Boaters, fishermen, kayakers and other recreational users learn about boundaries and general regulations of the marine protected areas located along the Bay Area coastline through education, outreach and our brochure. California's network of coastal marine protected areas (MPAs) is the first of its kind in the nation. These MPAs are special areas with unique habitats and species set aside to preserve a variety of marine life and ecosystems in a statewide network of interconnected MPAs.

