

Copyright Notice

and use restrictions

Entire contents
© 2008 Marc Shargel

This presentation in its **original** and **unmodified** form may be used for purpose of educating employees and volunteer staff of state and local parks, educational institutions, aquaria, and foundations in Central California regarding the network of marine protected areas created by MLPA.

All other rights are strictly reserved, and replication, display or distribution of any of these images without written permission from the owner is a violation of applicable law. Permission, however, is easy to obtain by email photo@lumigenic.com, or telephone 831-335-4849.

© 2008 Marc Shargel

www.LivingSeaimages.com

books@LivingSeaimages.com





© Marc Shargel
LivingSeaImages.com

© Marc Shargel LivingSeaImages.com

© Marc Shargel

LivingSeaImages.com

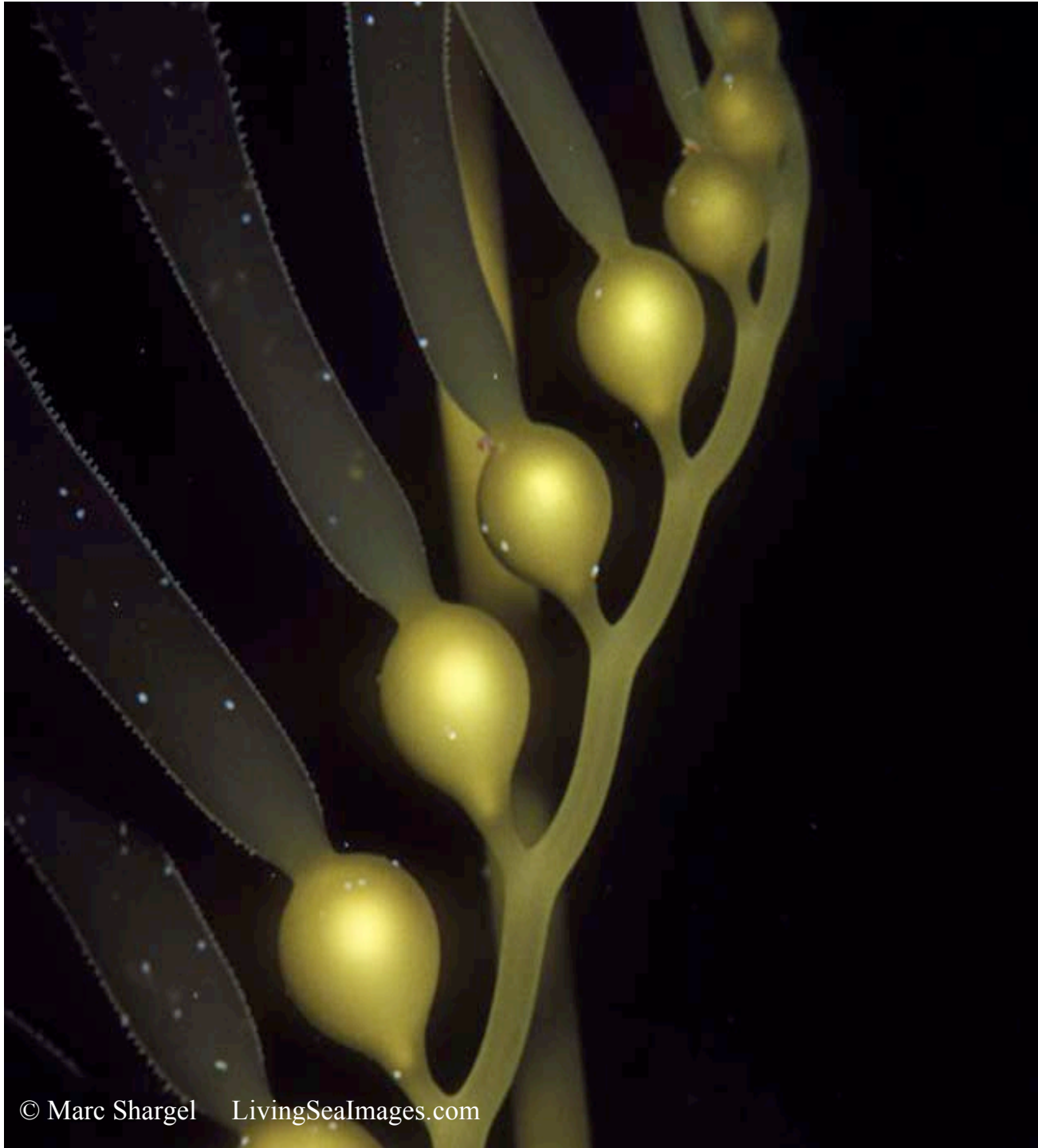




© Marc Shargel
LivingSeaImages.com







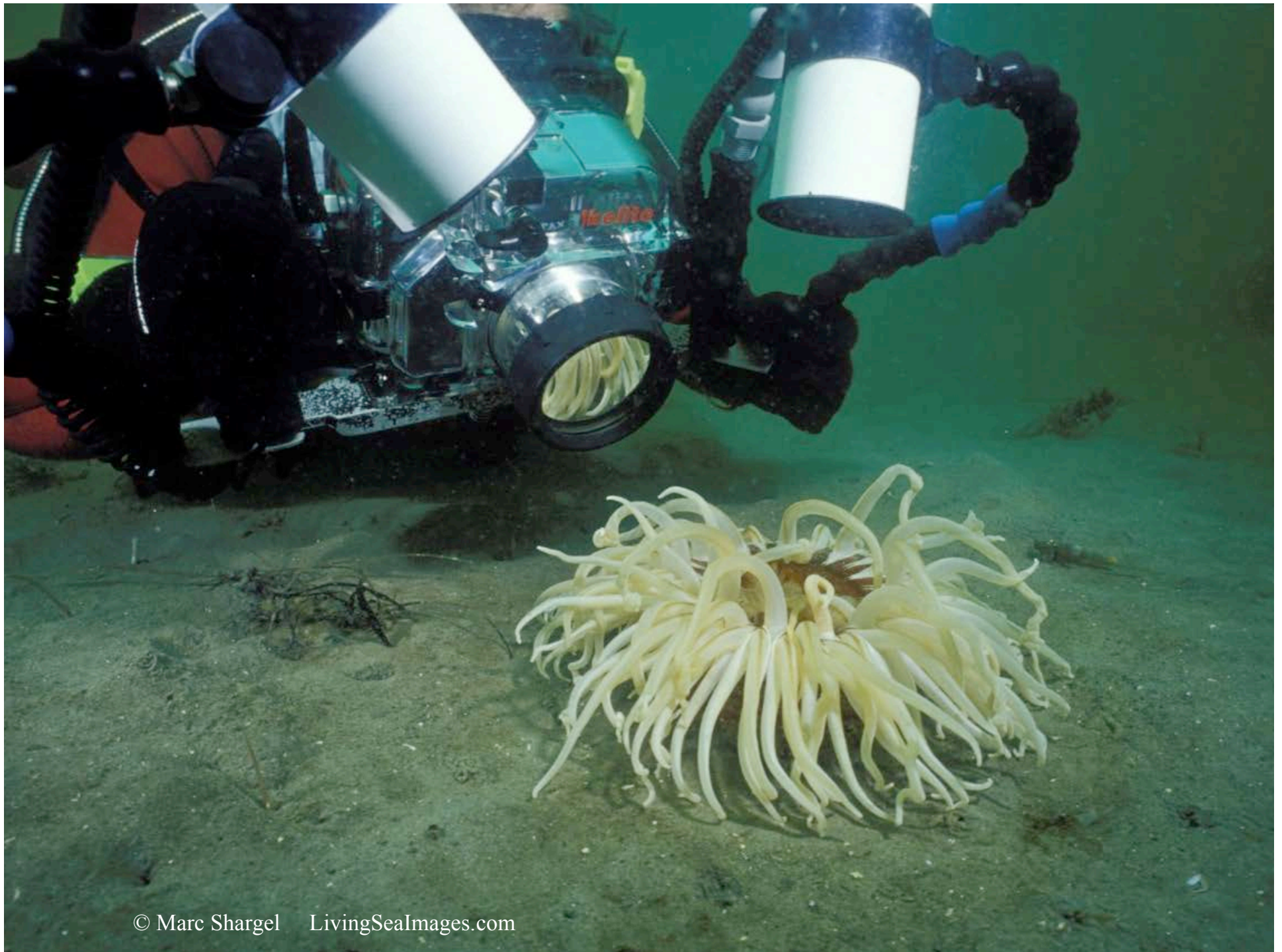








\$





© Marc Shangel

LivingSeaImages.com



© Marc Shangel LivingSeaImages.com



















© Marc Shargel
LivingSeaImages.com

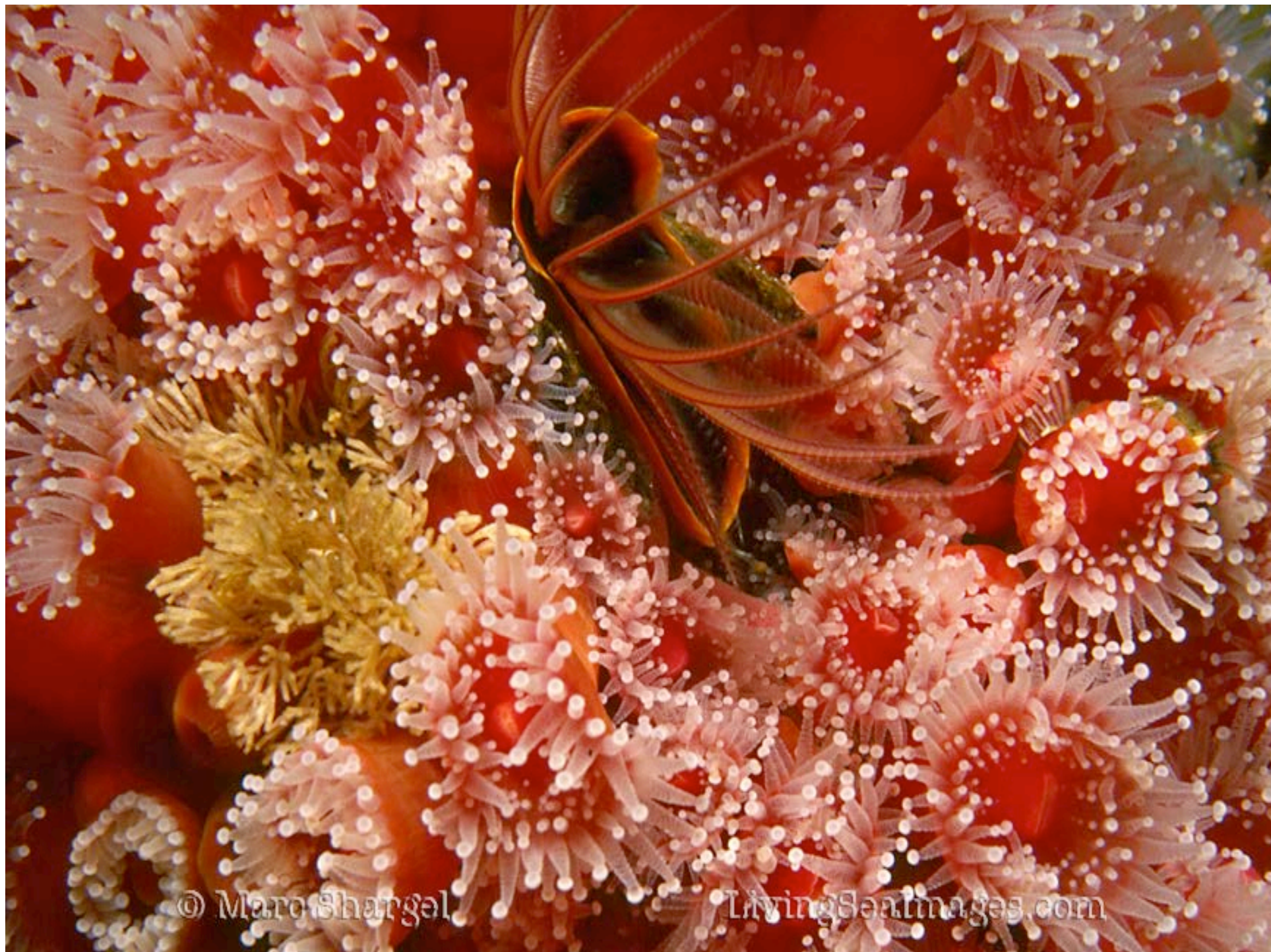
© Marc Shargel LivingSeaImages.com

Think Globally,
Act Locally









© Marc Shargel

LivingSeaImages.com



© Marc Shargel LivingSeaImages.com

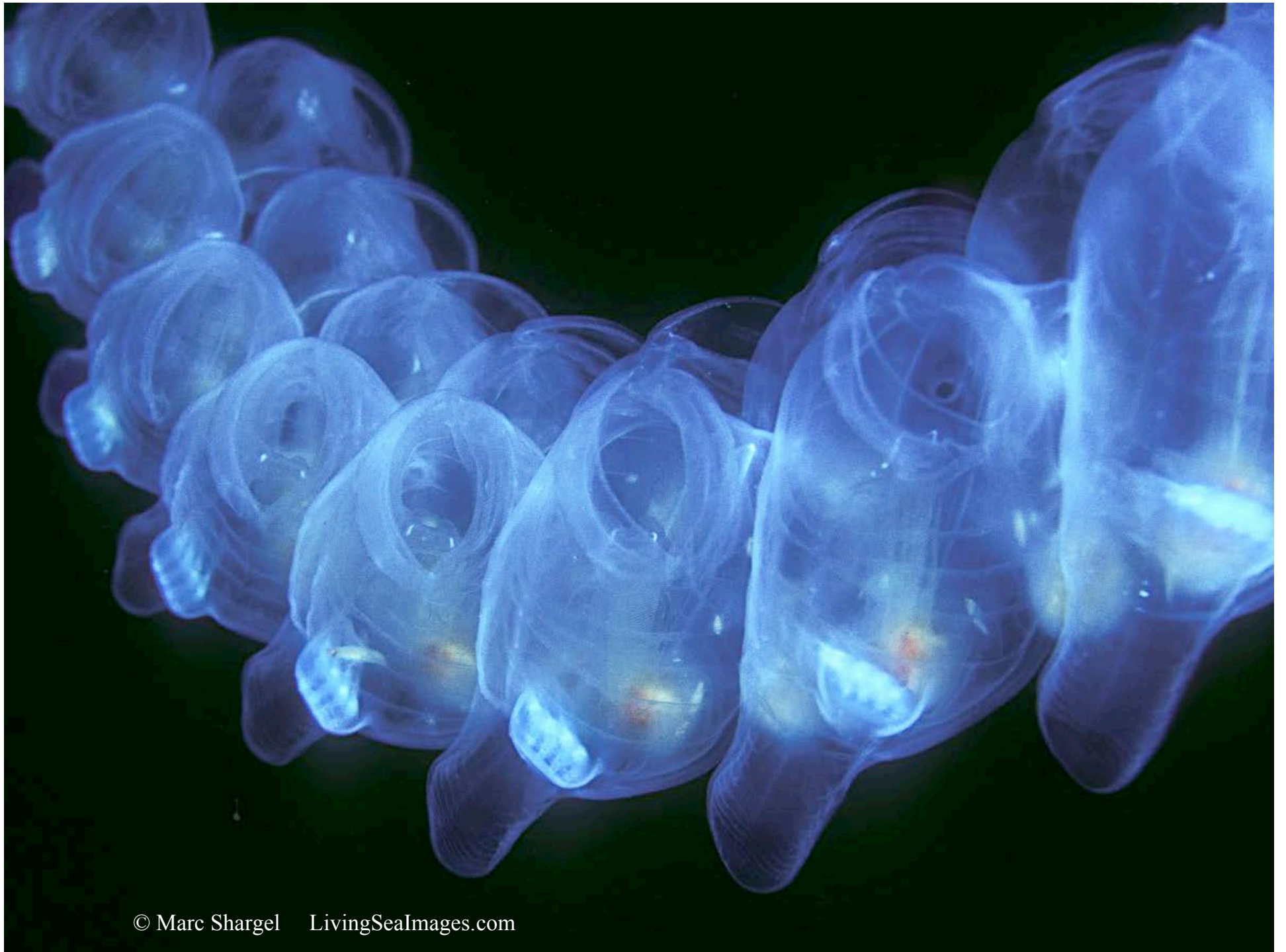
© Marc Shargel
LivingSeaImages.com



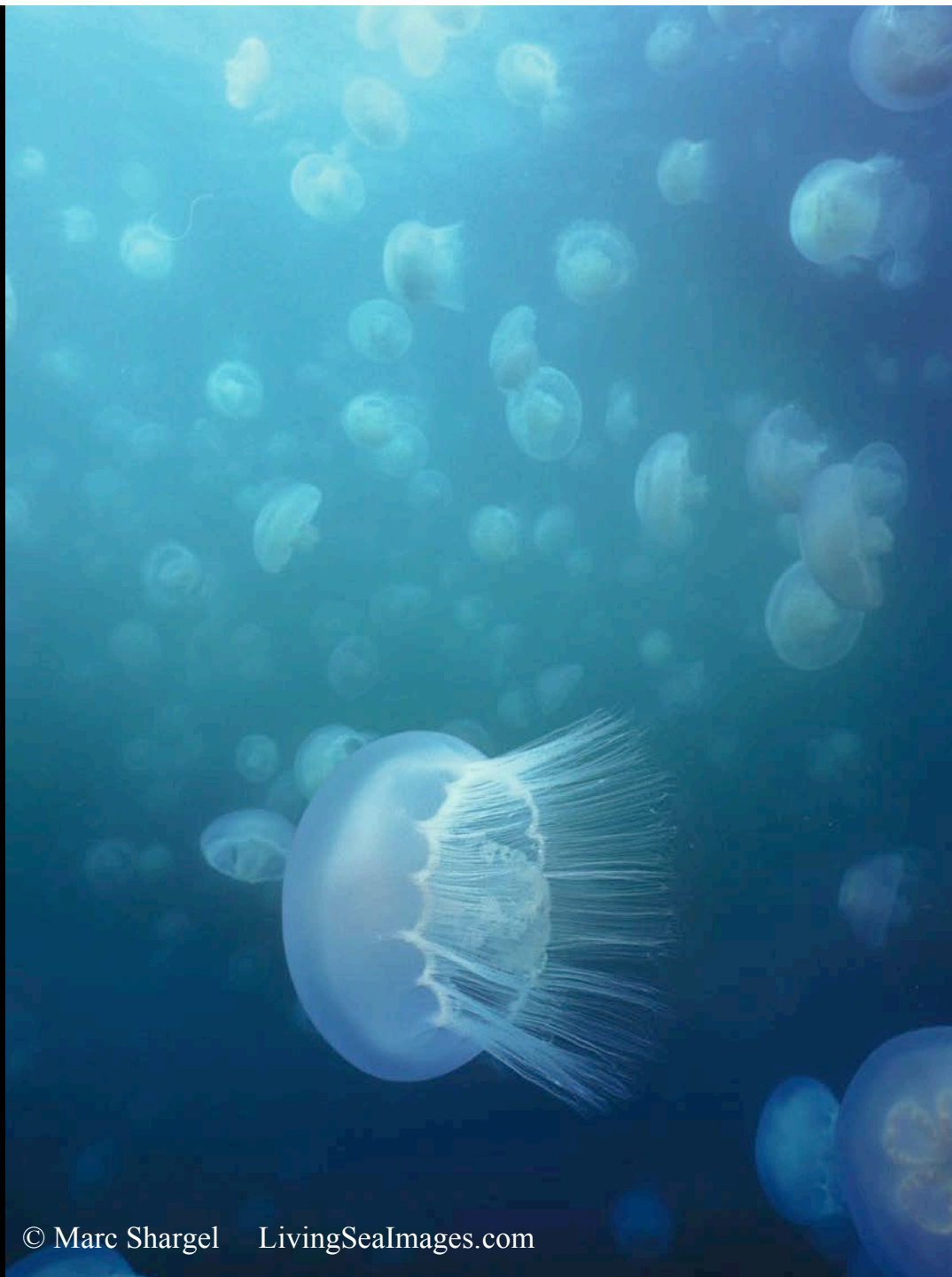
© Marc Shargel

LivingSeaImages.com



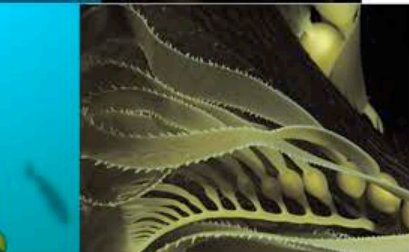
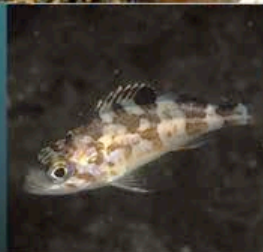
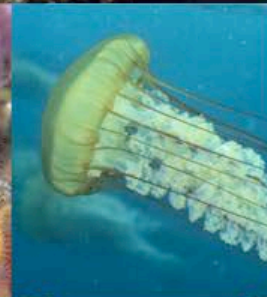
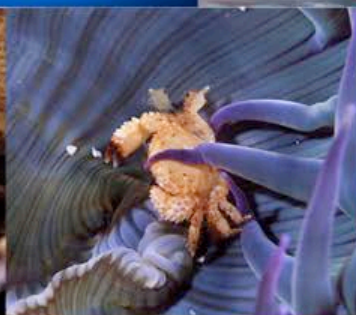
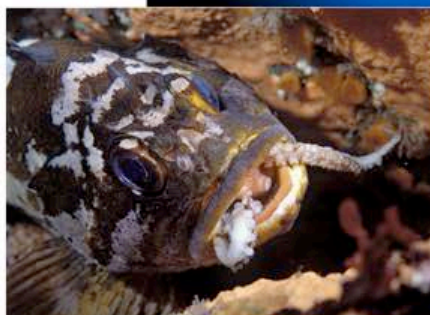
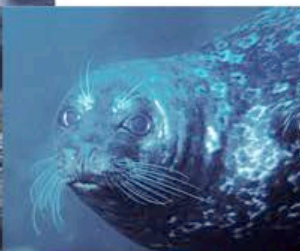


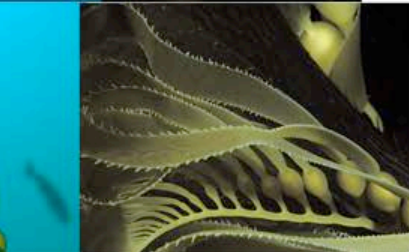
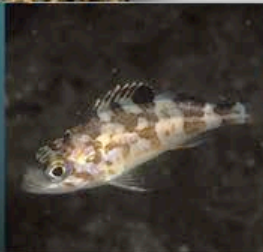
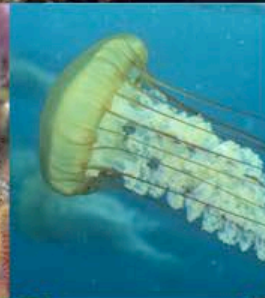
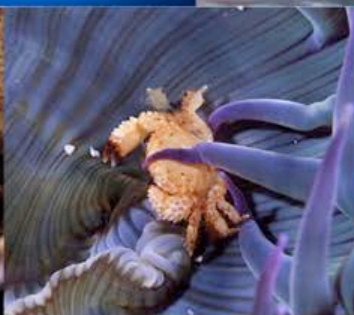
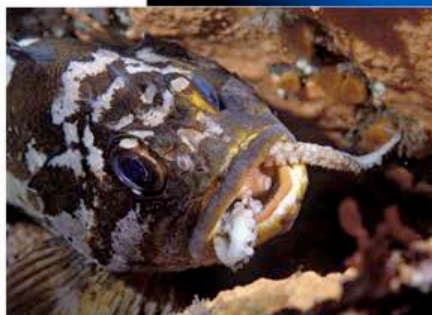
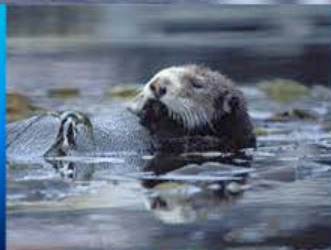


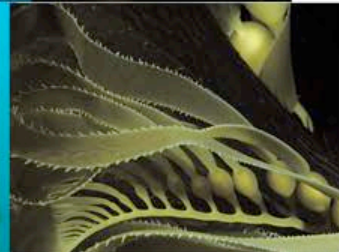
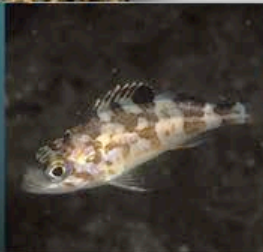
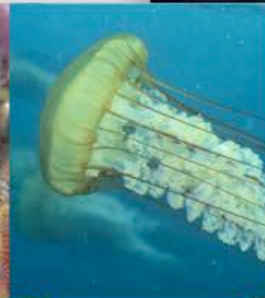
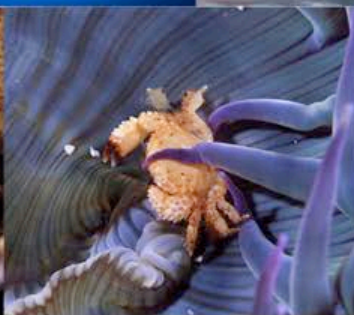
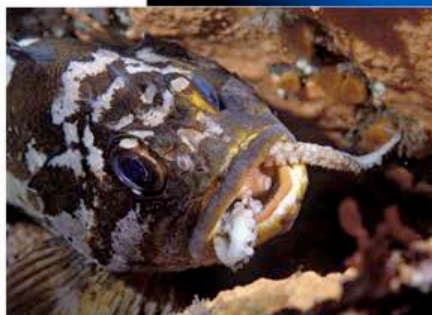
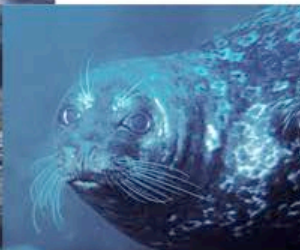
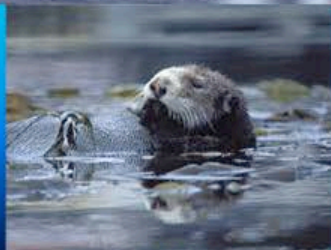


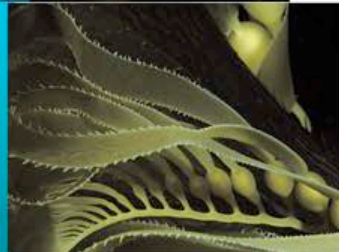
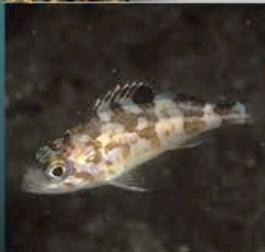
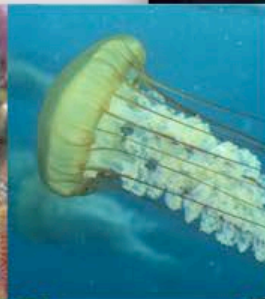
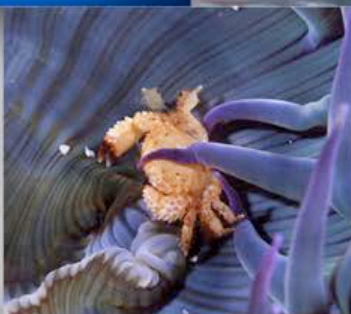
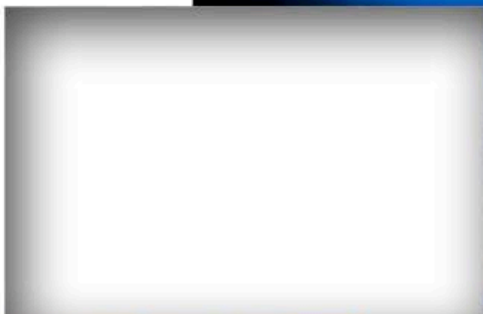
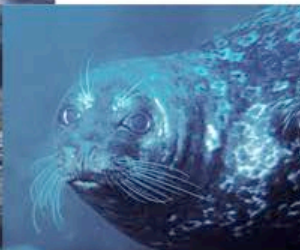
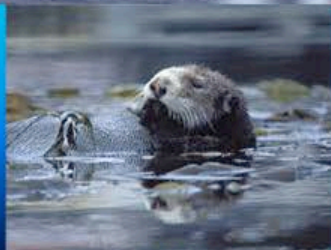
© Marc Shargel LivingSeaImages.com

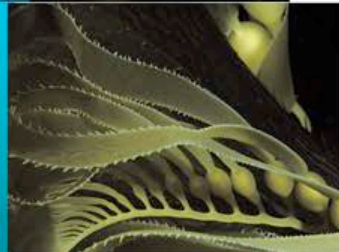
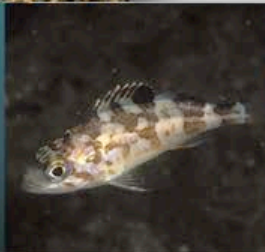
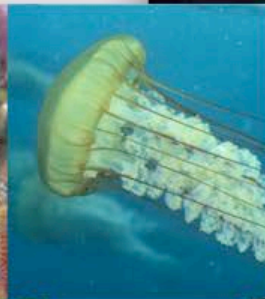
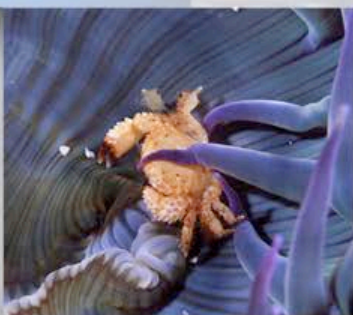
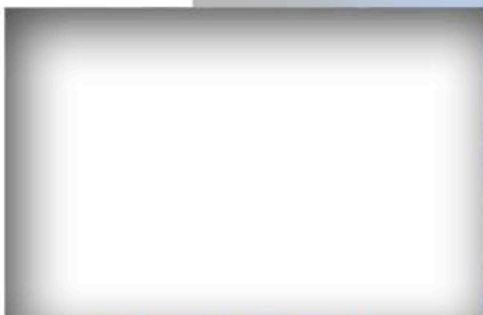
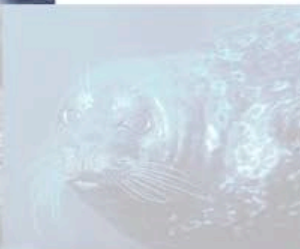


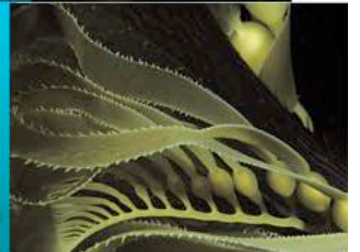
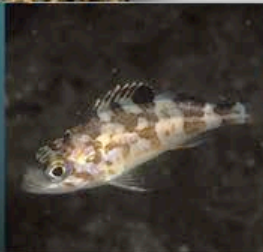
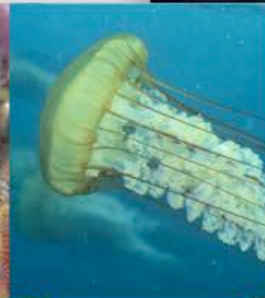
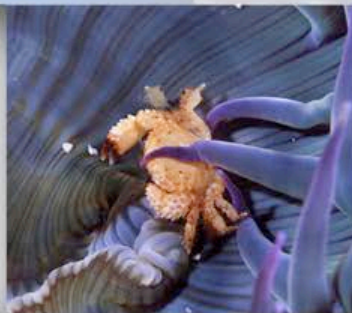
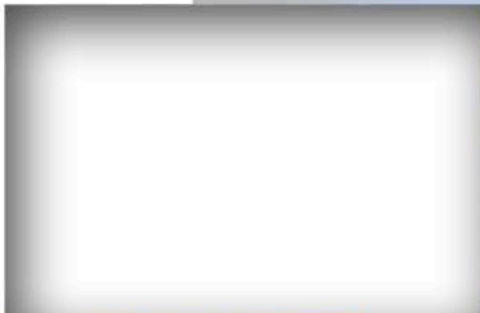


















Go North,
Young man





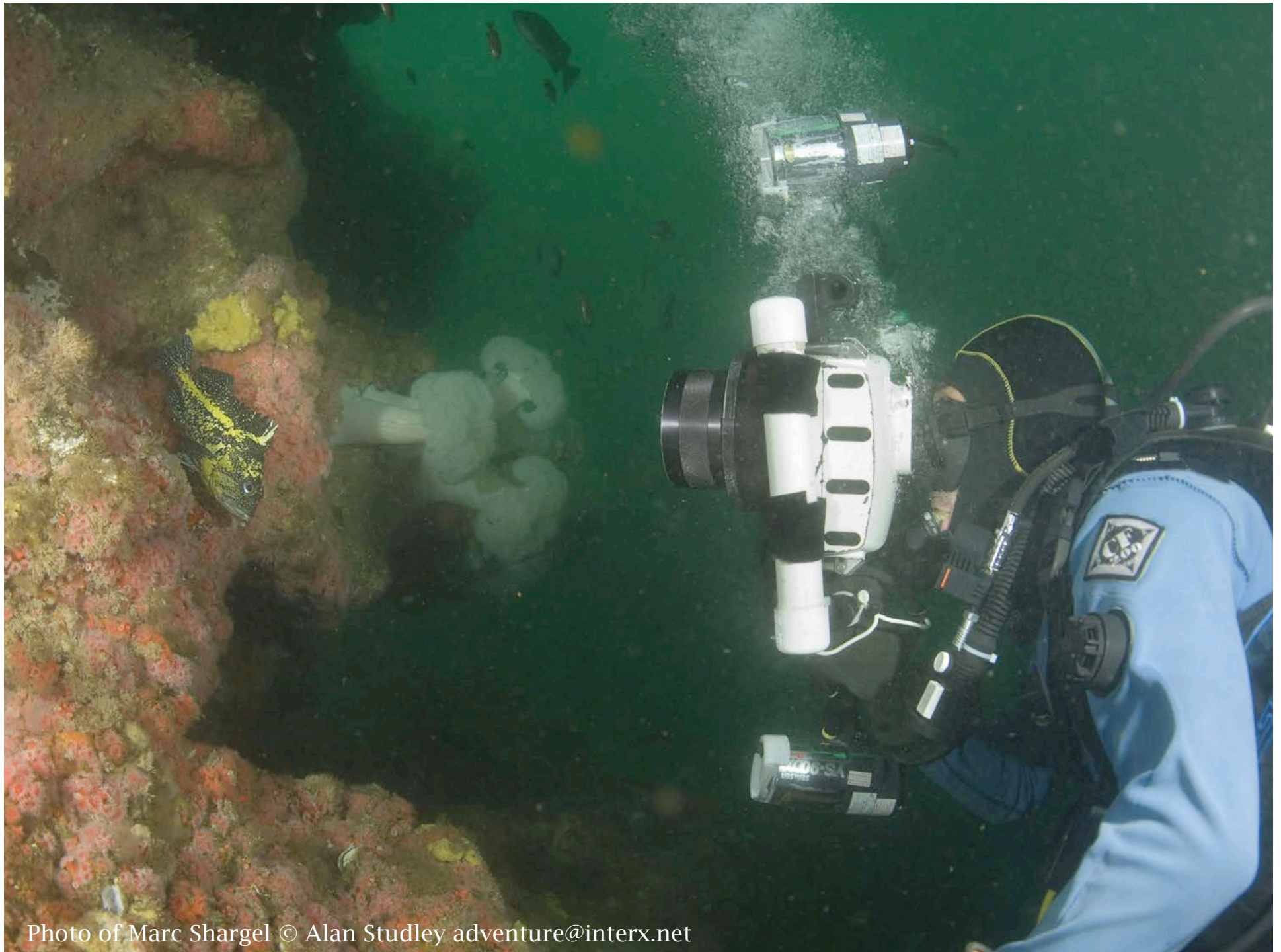


Photo of Marc Shargel © Alan Studley adventure@interx.net











Wonders of the Sea: North Central California's Living Marine Riches
Marc Shargel

Wonders of the Sea

North Central California's Living Marine Riches

Point Arena in Mendocino County to Pigeon Point in San Mateo County

Marc Shargel

Marc Shargel
Point Arena in Mendocino County to Pigeon Point in San Mateo County
North Central California's Living Marine Riches

A close-up photograph of a purple nudibranch with white outlines on its cerata, resting on a brown, textured rock. The background is a blurred underwater scene with various marine life and rocks.

Wonders of the Sea

North Central California's Living Marine Riches

Point Arena in Mendocino County to Pigeon Point in San Mateo County

Marc Shargel



© Marc Shargel - LivingSealImages.com



© Marc Shargel LivingSeaImages.com

















Central Coast MPA Regulations

Note: This document does not replace the official regulatory language found in Title 14, California Code of Regulations

MPA	Permitted/Prohibited Uses
Natural Bridges, Elkhorn Slough, Moro Cojo Slough, Lovers Point, Asilomar, Carmel Pinnacles, Point Sur, Big Creek, Piedras Blancas, Morro Bay, Point Buchon, Vandenberg SMRs	No recreational or commercial take allowed.
Point Lobos SMR	No recreational or commercial take allowed. Portions of this MPA are subject to State Park access rules.
Big Creek SMR	No recreational or commercial take allowed. No anchoring shallower than 10 fathoms.
Año Nuevo SMCA	No recreational take allowed. Allows commercial take of giant kelp by hand.
Greyhound Rock SMCA	Allows recreational take of giant kelp by hand, squid, salmon, and by hook and line from shore only other finfish. Allows commercial take of salmon, squid and giant kelp by hand.
Elkhorn Slough SMCA	Allows recreational take of clams and finfish by hook and line only. Clams may only be taken on the north shore of the slough in area adjacent to Moss Landing State Wildlife Area.
Soquel Canyon and Portuguese Ledge SMCA	Allows recreational and commercial take of pelagic finfish. ¹
Edward F. Ricketts SMCA	Allows recreational take of finfish by hook and line. Allows commercial take of giant and bull kelp by hand in specifically defined areas.
Pacific Grove Marine Gardens SMCA	Allows recreational take of finfish. Allows commercial take of giant and bull kelp by hand.
Carmel Bay SMCA	Allows recreational take of finfish. Allows commercial take of giant and bull kelp.
Point Lobos SMCA	Allows recreational take of salmon and albacore. Allows commercial take of salmon, albacore and spot prawn.
Point Sur, Big Creek, Piedras Blancas and Point Buchon SMCA	Allows recreational and commercial take of salmon and albacore only.
Cambria SMCA	Allows all recreational take. No commercial take allowed.
White Rock (Cambria) SMCA	No recreational take allowed. Allows commercial take of giant and bull kelp by hand.
Morro Bay SMRMA	No recreational or commercial take allowed in southern areas. Certain recreational and commercial take allowed in northern area.

¹ Pelagic finfish as defined by California Fish and Game Commission regulations.

Unless specifically prohibited, non-consumptive activities, such as diving, surfing, swimming and boating are allowed within the MPAs, as long as take restrictions are followed.

Summaries of individual Central Coast MPA boundaries, coordinates and allowed uses as well as MPA specific maps are available at www.dfg.ca.gov/mlpa. Information may also be obtained from your local California Department of Fish and Game office.

Central Coast Marine Protected Areas



**Guide to the
Central California
Marine Protected Areas**
Pigeon Point to Point Conception





Boundary and Regulations - Edward F. Ricketts SMCA
from California Code of Regulations, Title 14
Section 632, sub-section (b)(35)

(A) Boundary

This area is bounded by the mean high tide line and straight lines connecting the following points in the order listed:

36° 36.50' N. lat. 121° 53.37' W. long.;
36° 37.25' N. lat. 121° 53.78' W. long.; and
36° 37.10' N. lat. 121° 54.09' W. long.

(B) Permitted/Prohibited Uses

Take of all living marine resources is prohibited except:

1. The recreational take of finfish by hook-and-line is allowed.
2. The commercial take of giant kelp (*Macrocystis pyrifera*) and bull kelp (*Nereocystis* spp.) is allowed by hand in the area defined by sub-section 165(c)(4)(D) under the following conditions:
 - a. A kelp harvester with a valid license issued pursuant to Section 165 may take no more than 12 tons of kelp from the portion of Administrative Kelp Bed 220 within the Edward F. Ricketts State Marine Conservation Area in any calendar month.
 - b. Duplicate landing records must be kept on board the harvest vessel in accordance with the requirements of Section 165.



t's All Connected"

All photos © www.LivingSeas.org

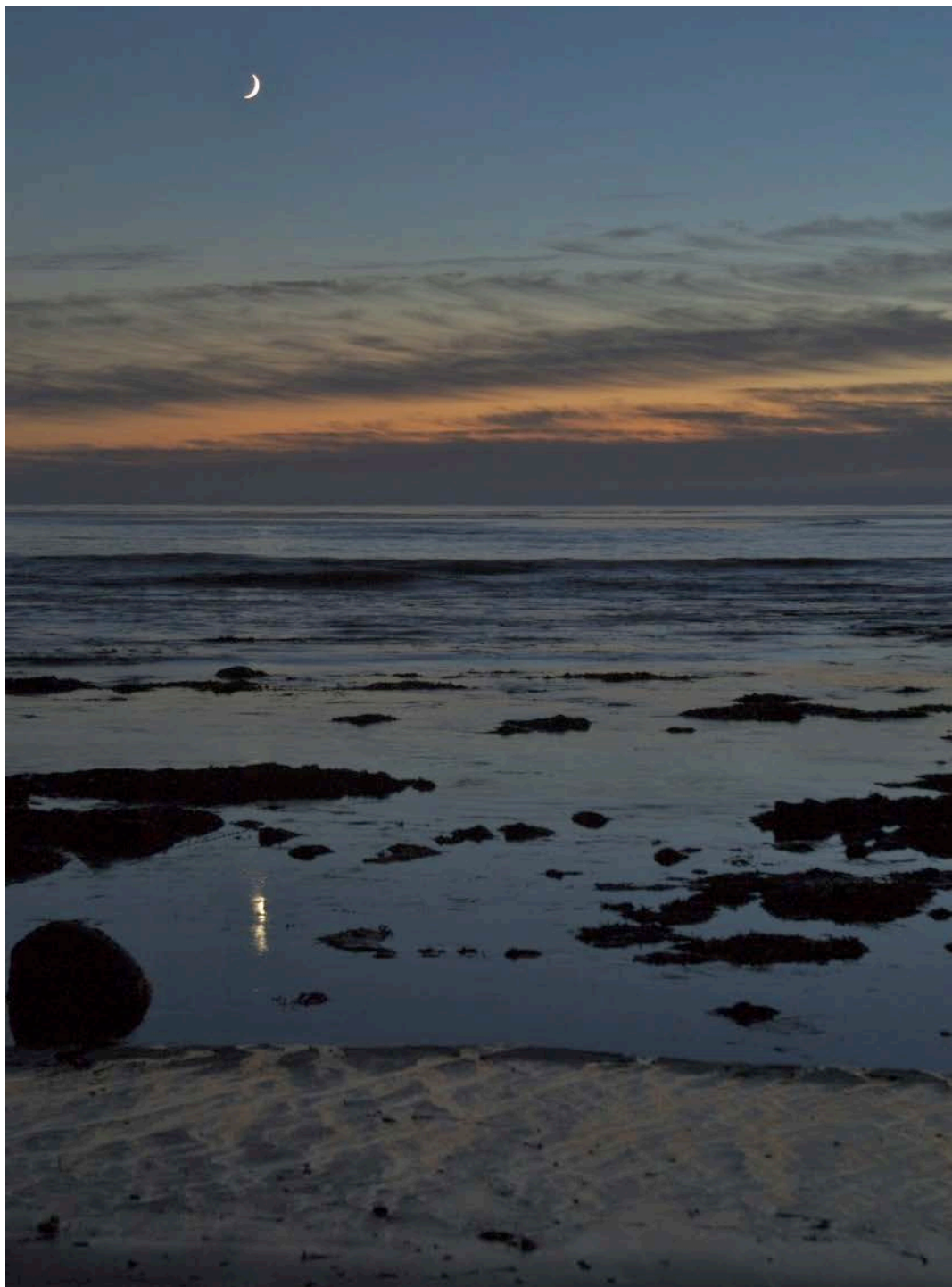
A central collage of marine life. At the top left is a yellow jellyfish. To its right is a sea otter. Below the jellyfish is a nudibranch. To the right of the otter is another nudibranch. In the center is a large kelp forest. To the left of the kelp is a crab. To the right of the kelp is a fish. At the bottom left is a crab. At the bottom center is a kelp stalk with yellow buds. At the bottom right is a nudibranch.

www.LivingSeaImages.com









© 2008 Marc Shargel

www.LivingSeaimages.com

books@LivingSeaimages.com





