

Edward F. Ricketts State Marine Conservation Area; Lovers Point State Marine Reserve; Pacific Grove State Marine Conservation Area; Asilomar State Marine Reserve

Size of MPA(s):

2.96 mi² (combined area)

Depth range of MPA(s):

Shore to 172 feet

Key habitats protected:

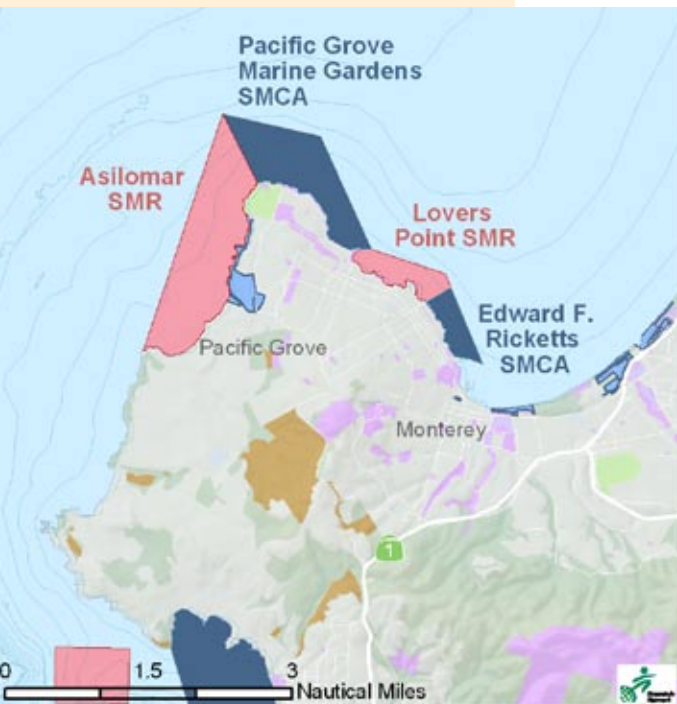
Kelp forest, beach, rocky intertidal, soft and hard bottom



Photo courtesy of NOAA



© Kip Evans Photography - www.MountainSeaGallery.com



The natural beauty and bountiful ocean resources of the Monterey Peninsula draw millions of visitors from around the world each year, including more than 60,000 scuba divers attracted by the area's vibrant underwater living treasures.

- Located adjacent to the cities of Monterey and Pacific Grove, this series of small MPAs helps protect some of the central coast's most heavily used and most accessible nearshore areas while maintaining traditional recreational access and open fishing grounds offshore.
- The Monterey Peninsula includes extensive tidepools teeming with marine life, sandy beaches used by pupping harbor seals, and dense kelp beds that provide shelter for sea otters.
- The Monterey Peninsula MPAs provide unsurpassed research opportunities for scientific and educational institutions including the Hopkins Marine Station, the Monterey Bay Aquarium and Moss Landing Marine Laboratories.